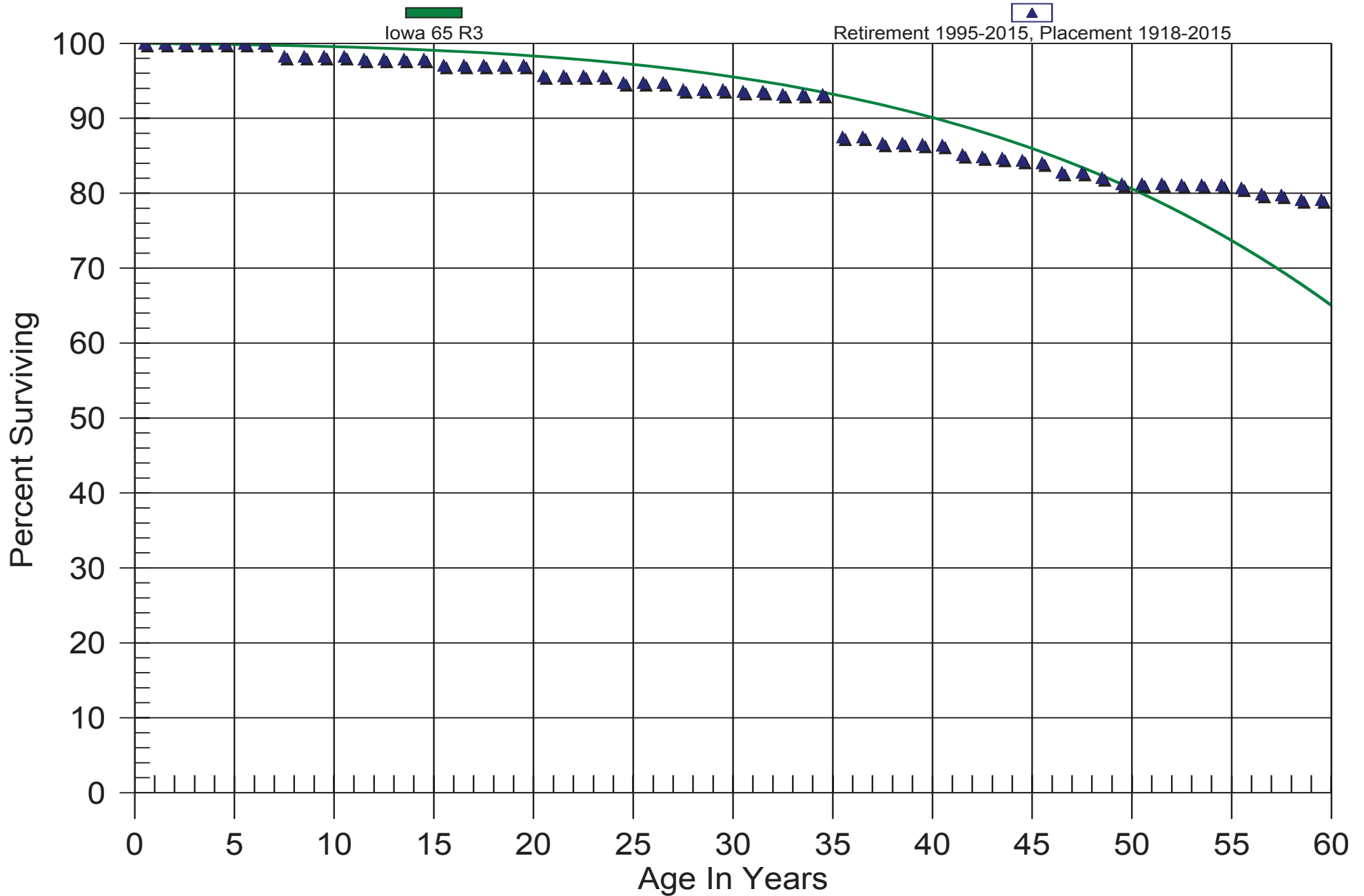


# Montana-Dakota Utilities Company

Gas Division

375.00 STRUCTURES & IMPROVEMENTS

Original And Smooth Survivor Curves

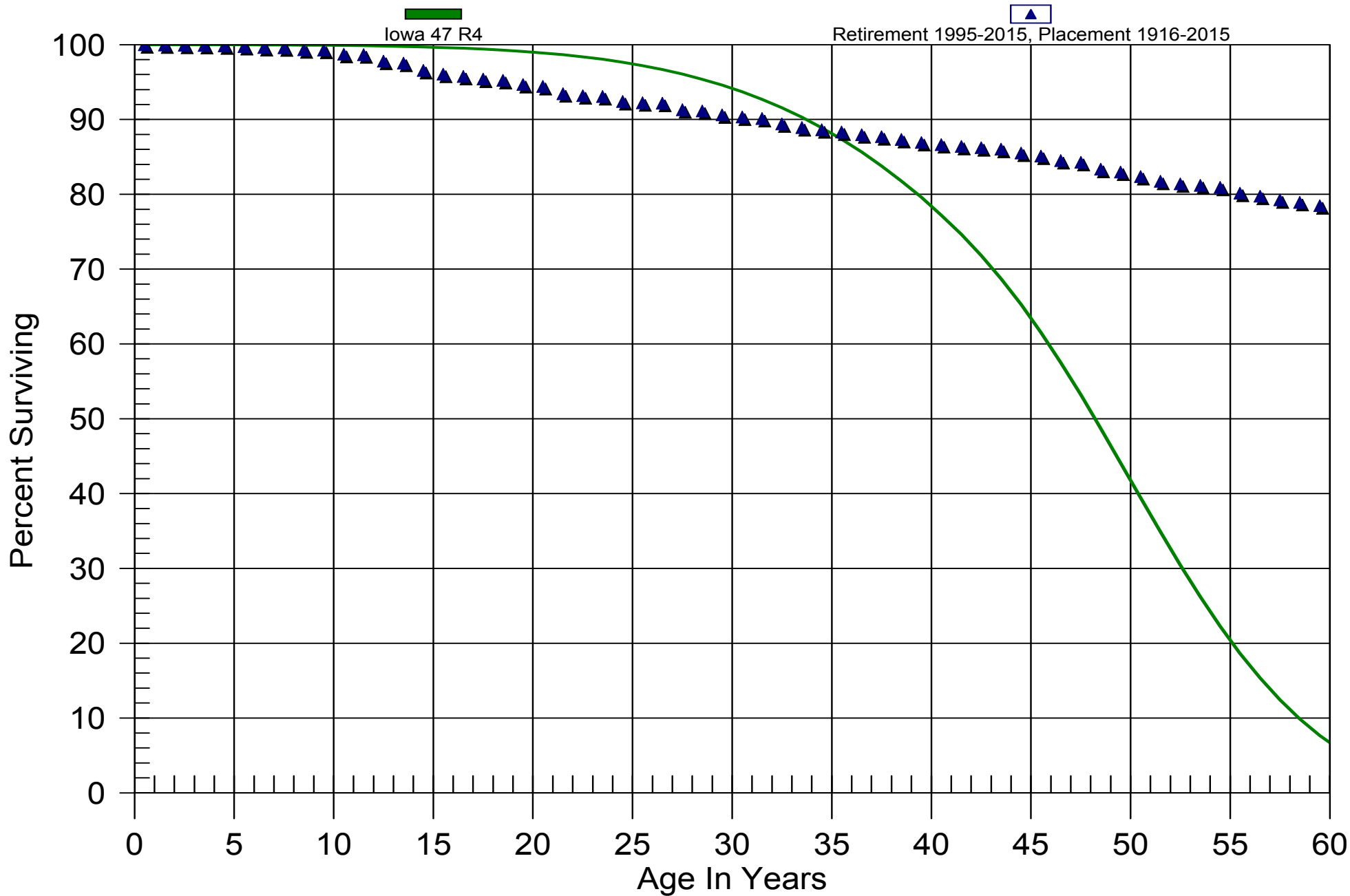


# Montana-Dakota Utilities Company

Gas Division

376.10 MAINS - STEEL

Original And Smooth Survivor Curves

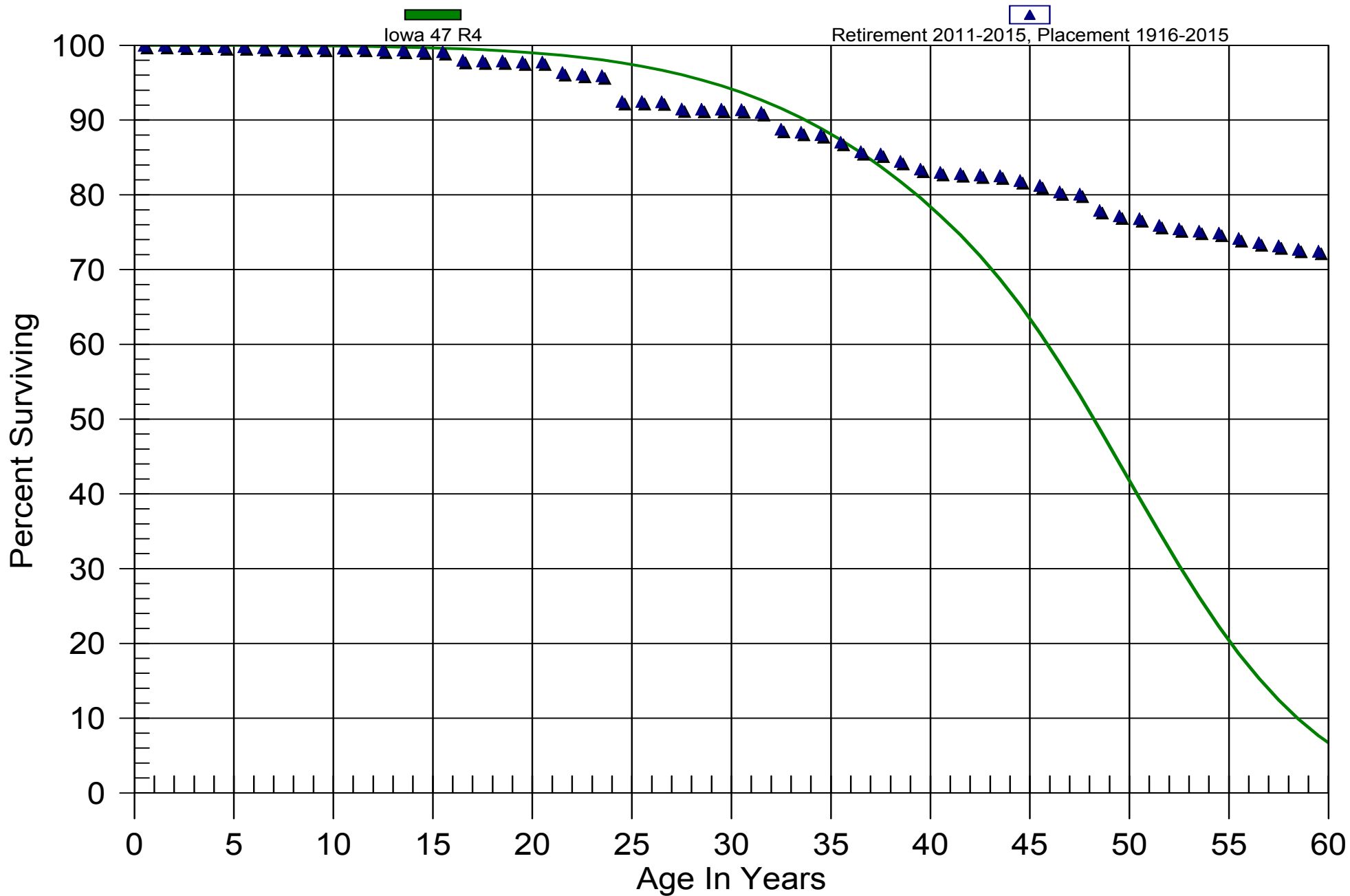


# Montana-Dakota Utilities Company

Gas Division

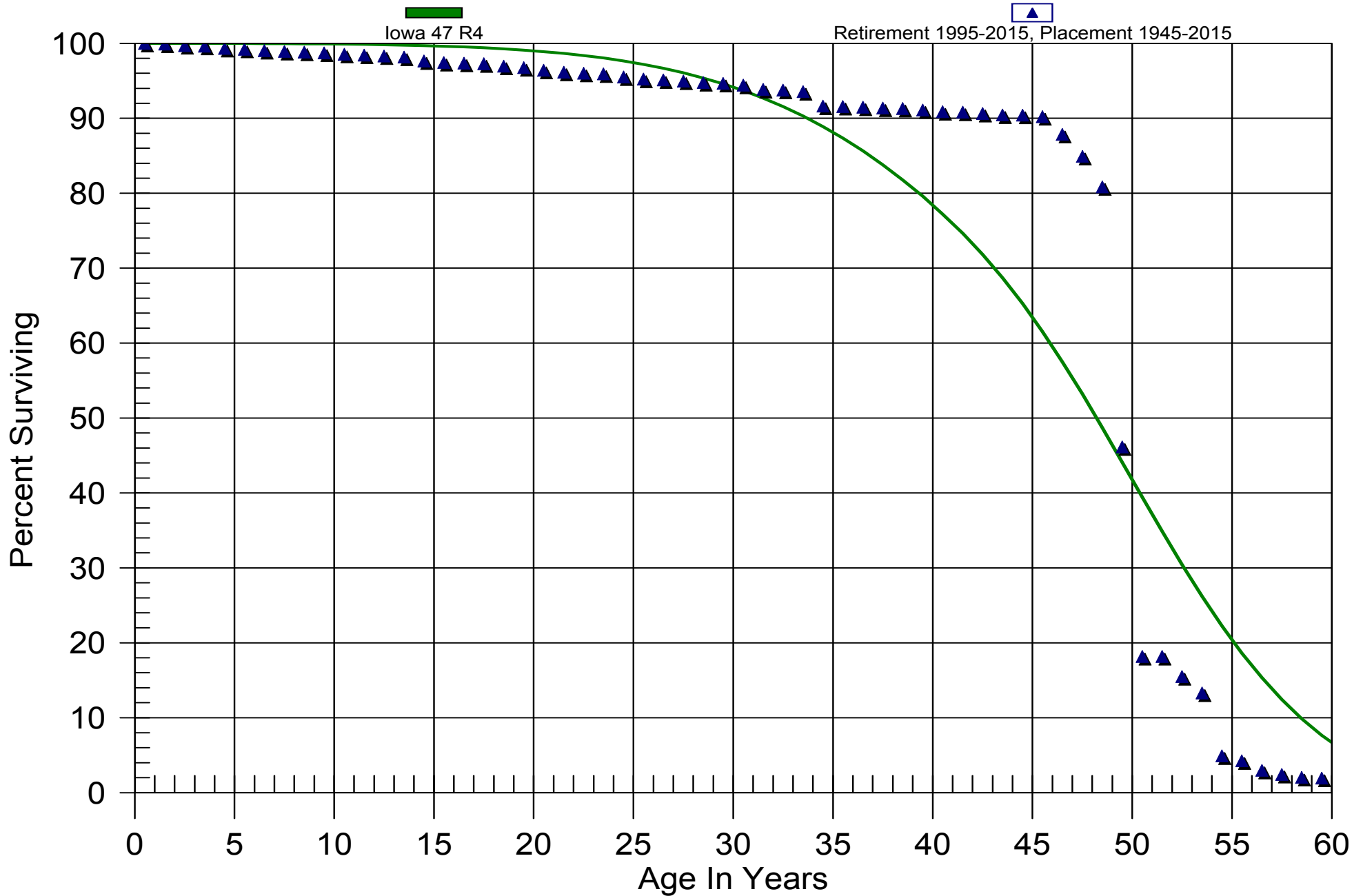
376.10 MAINS - STEEL

Original And Smooth Survivor Curves



# Montana-Dakota Utilities Company

## Gas Division 376.20 MAINS - PLASTIC Original And Smooth Survivor Curves

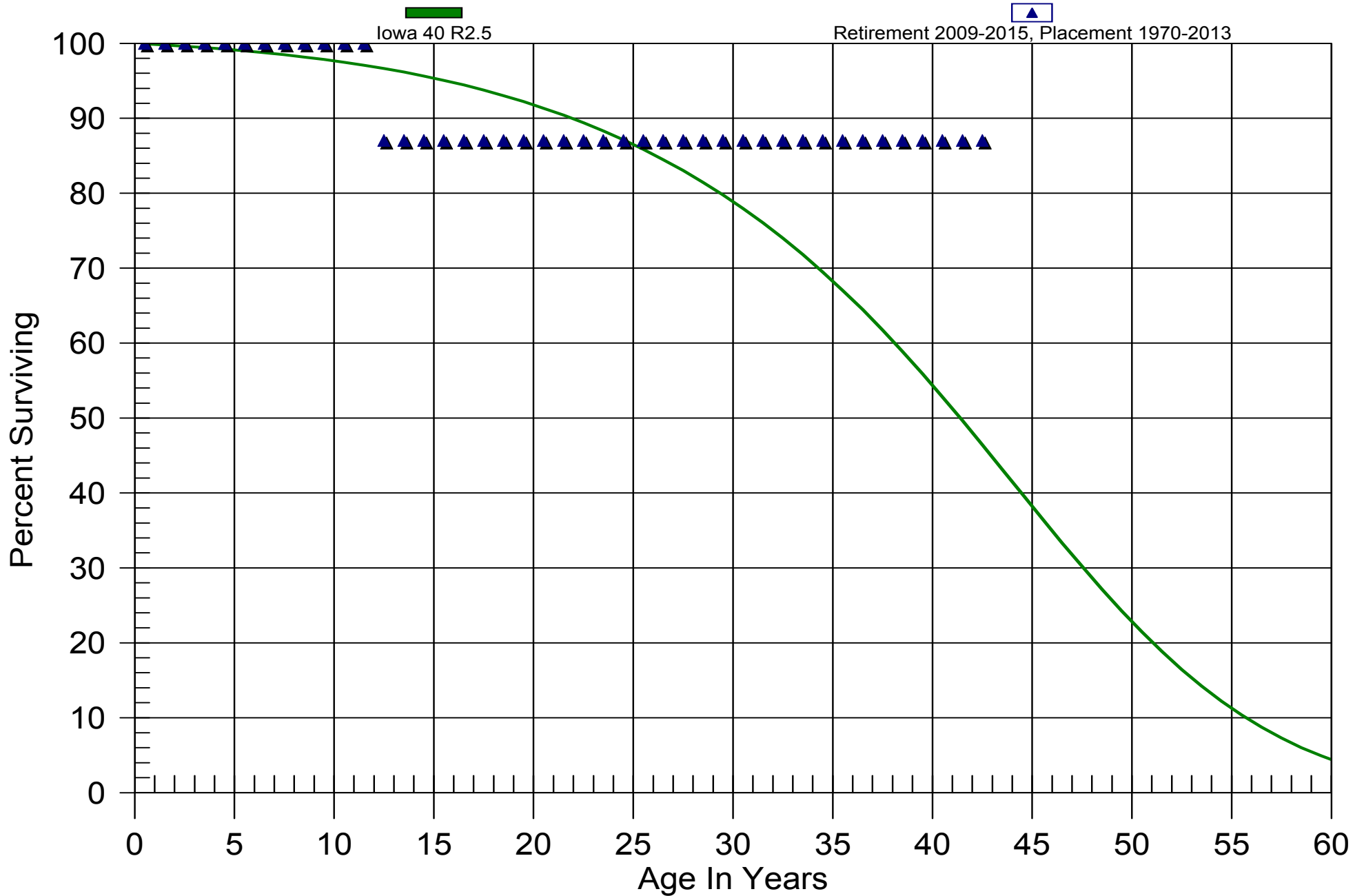


# Montana-Dakota Utilities Company

Gas Division

376.30 MAINS - VALVES

Original And Smooth Survivor Curves

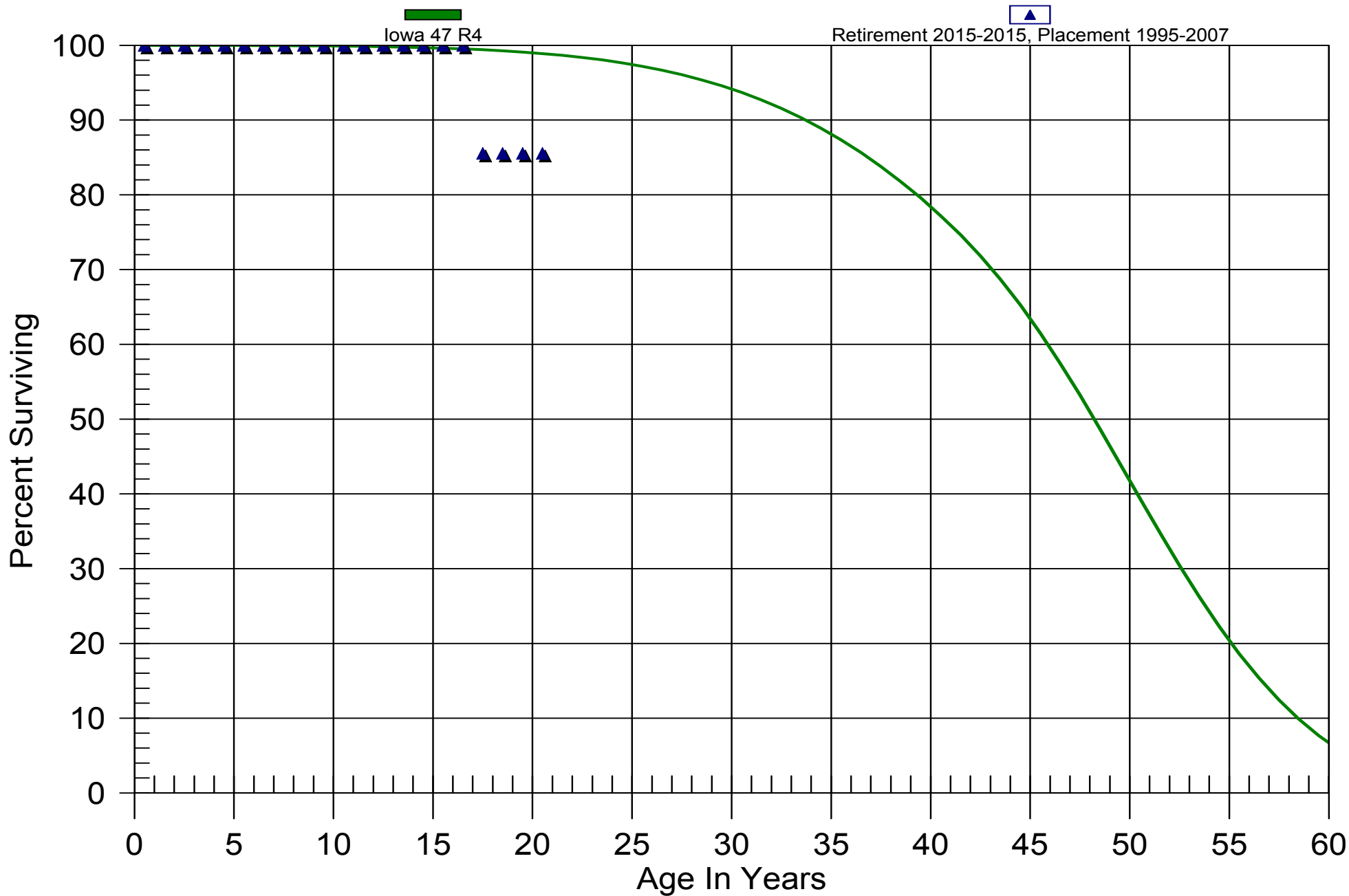


# Montana-Dakota Utilities Company

## Gas Division

### 376.50 MAINS - BRIDGE & RIVER CROSSINGS

#### Original And Smooth Survivor Curves

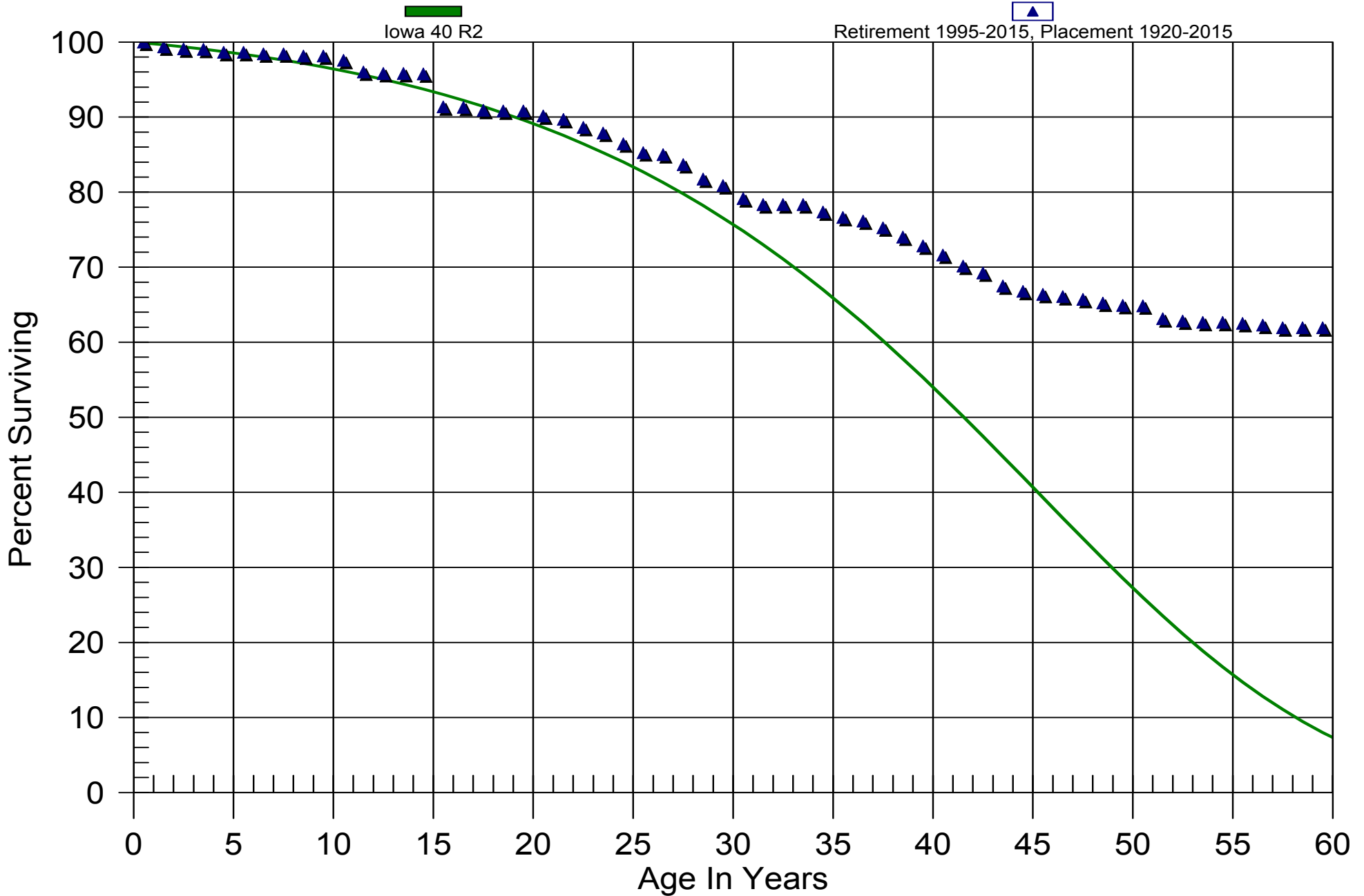


# Montana-Dakota Utilities Company

Gas Division

378.00 MEAS. & REG. STATION EQUIP. - GENERAL

Original And Smooth Survivor Curves

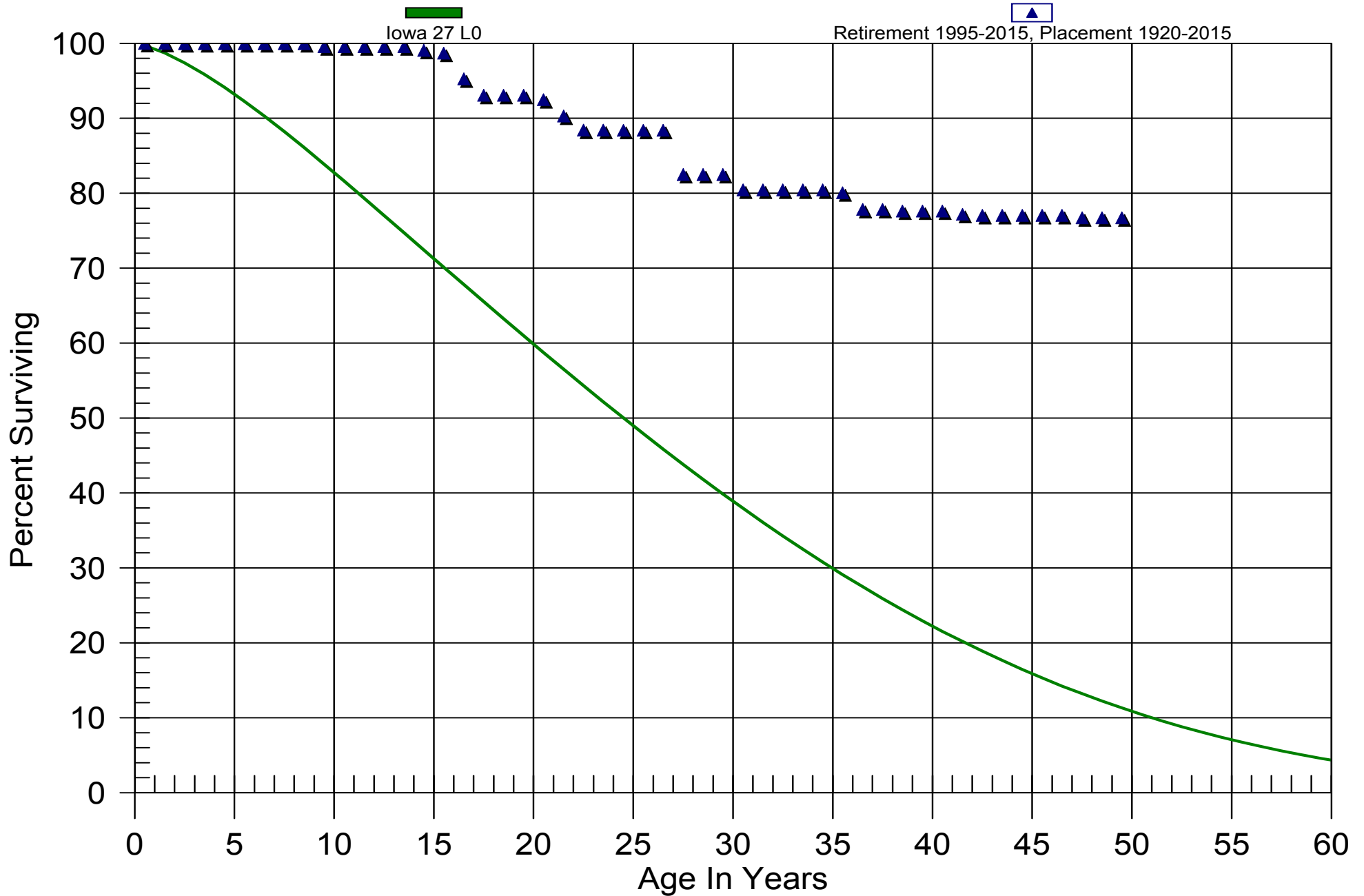


# Montana-Dakota Utilities Company

## Gas Division

### 379.00 MEAS. & REG. STATION EQUIP. - CITY GATE

#### Original And Smooth Survivor Curves



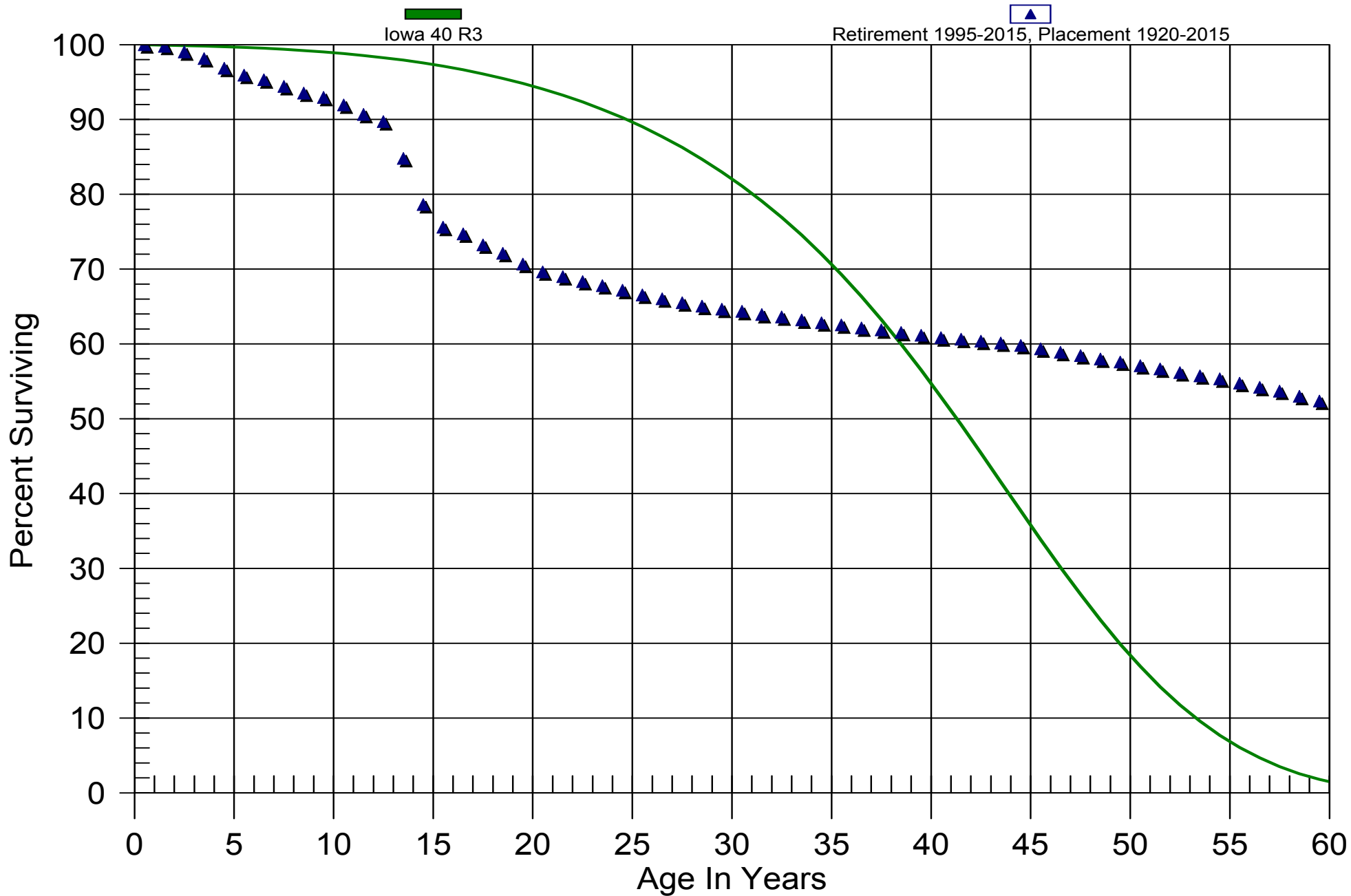


# Montana-Dakota Utilities Company

Gas Division

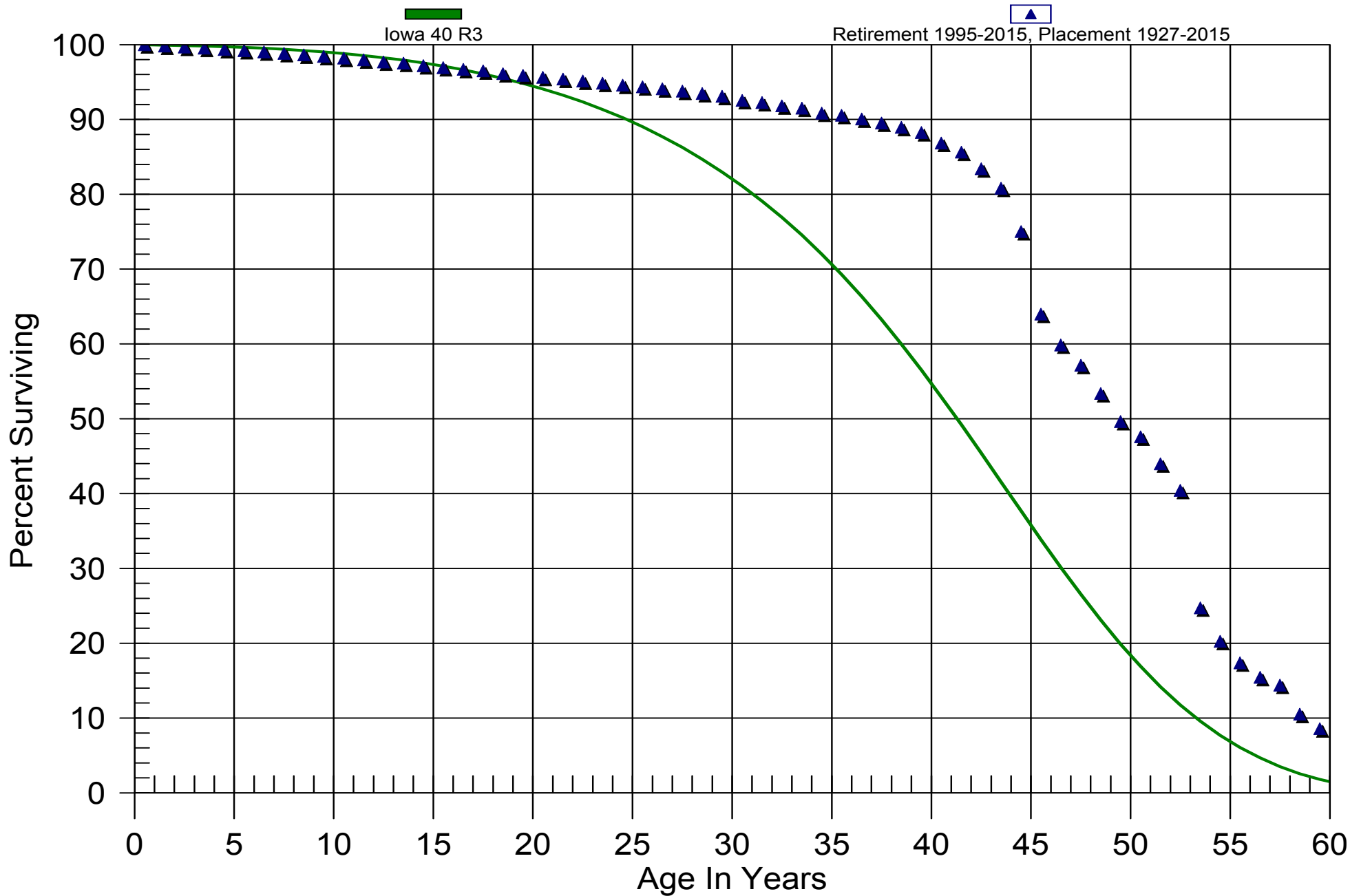
380.10 SERVICES - STEEL

Original And Smooth Survivor Curves



# Montana-Dakota Utilities Company

## Gas Division 380.20 SERVICES - PLASTIC Original And Smooth Survivor Curves

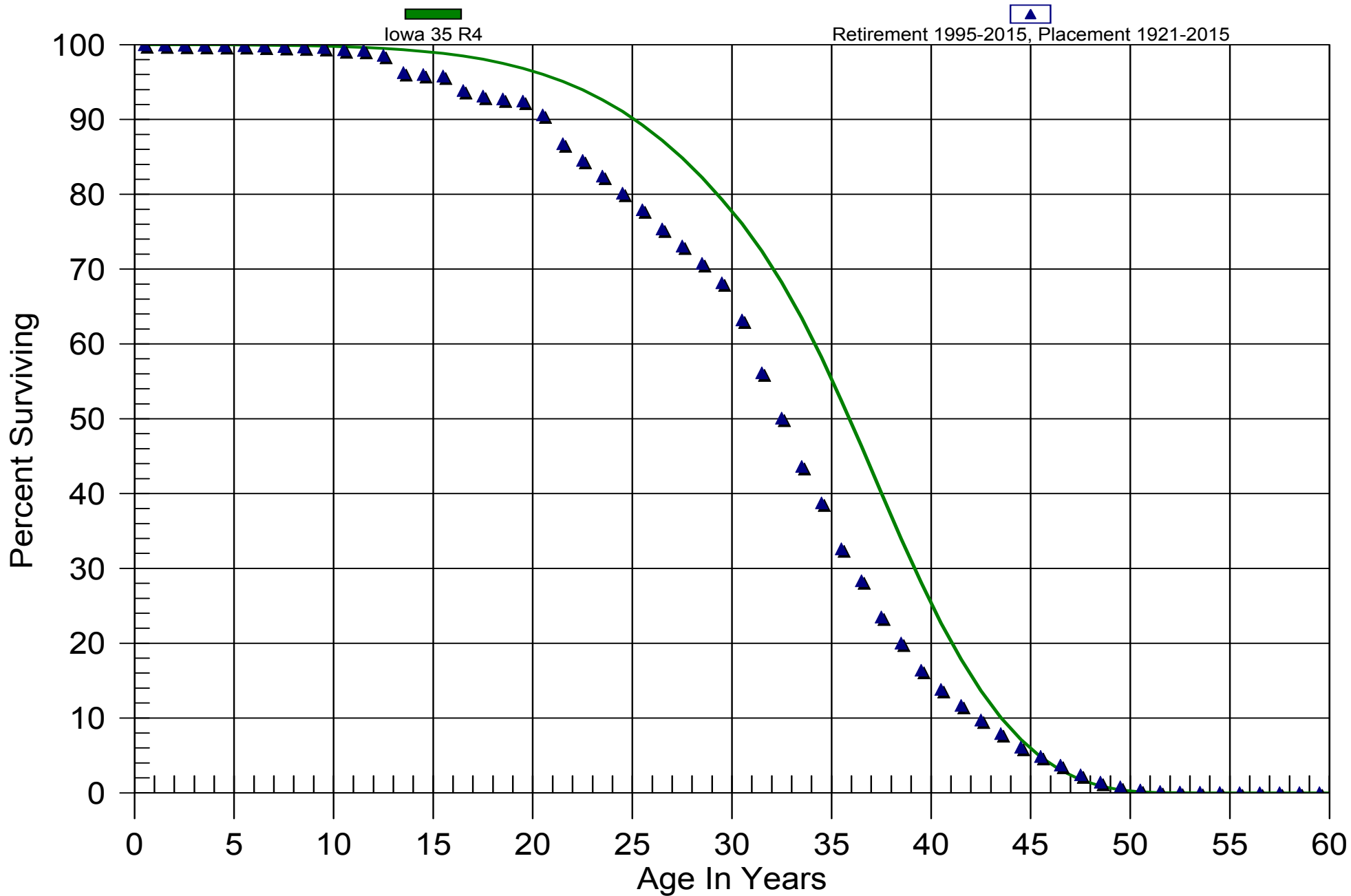


# Montana-Dakota Utilities Company

Gas Division

381.00 METERS

Original And Smooth Survivor Curves

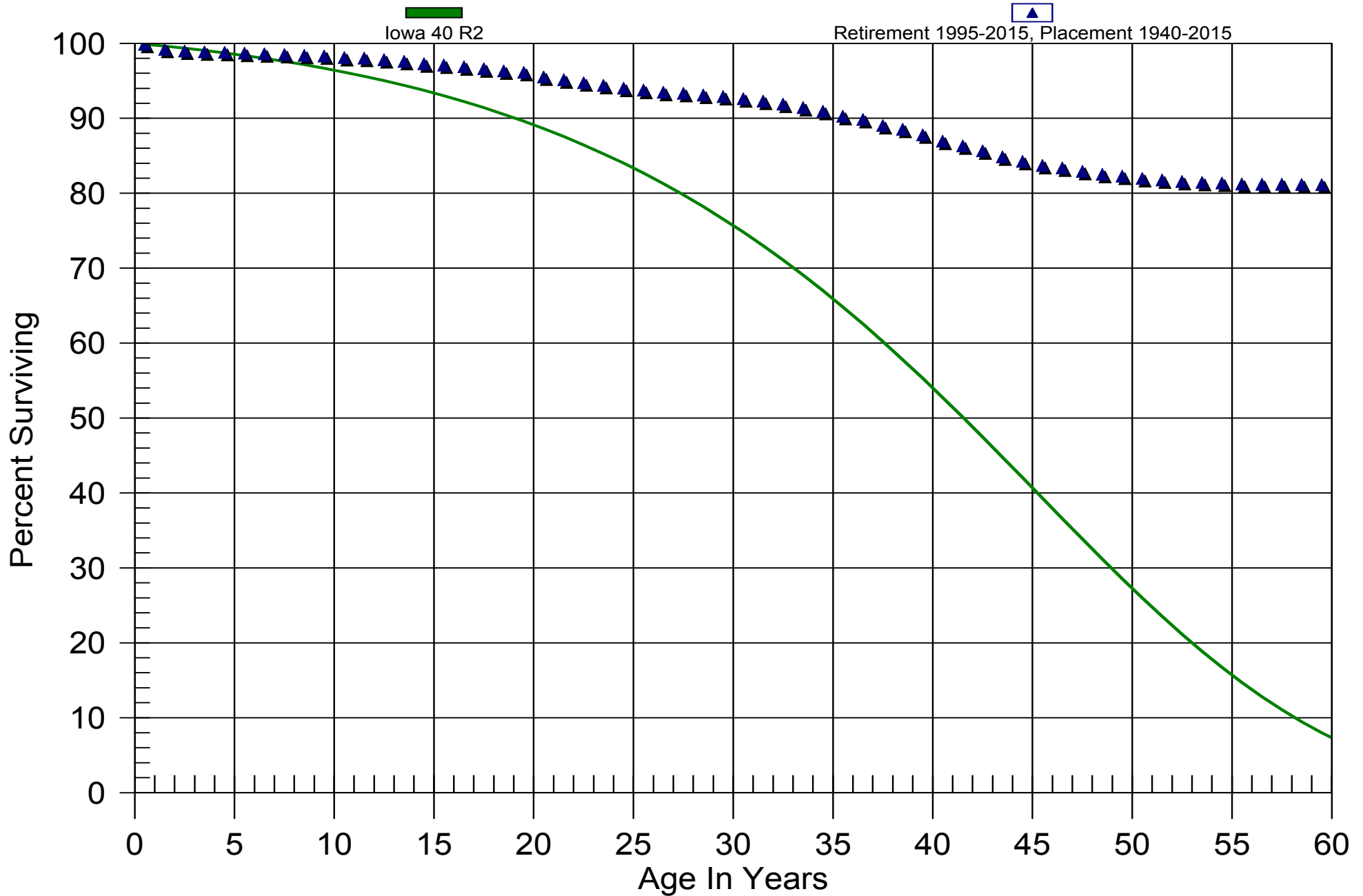


# Montana-Dakota Utilities Company

Gas Division

383.00 HOUSE REGULATORS

Original And Smooth Survivor Curves

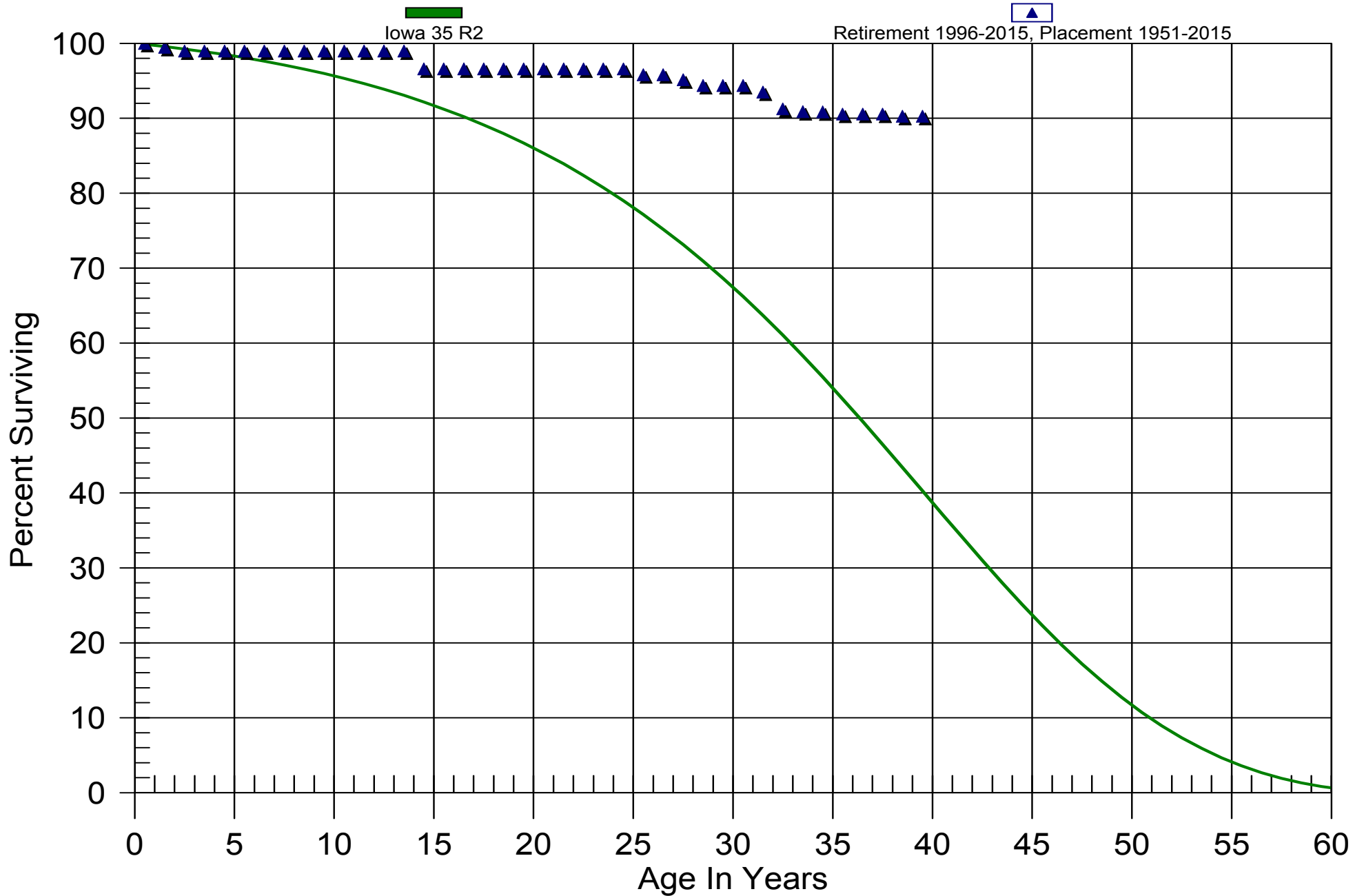


# Montana-Dakota Utilities Company

Gas Division

385.00 IND. MEAS. & REG. STA. EQUIP.

Original And Smooth Survivor Curves

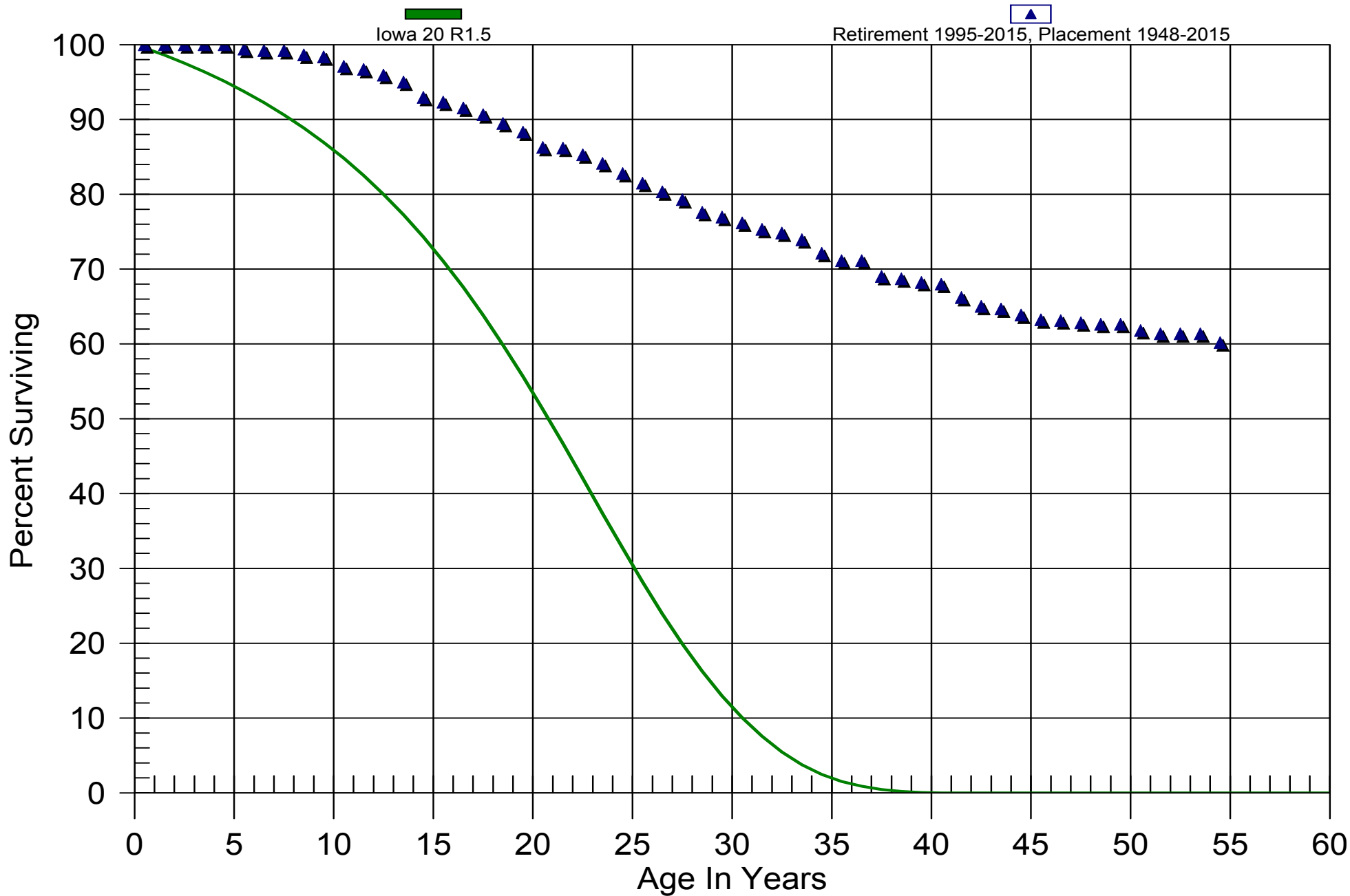


# Montana-Dakota Utilities Company

Gas Division

387.10 CATHODIC PROTECTION EQUIP.

Original And Smooth Survivor Curves

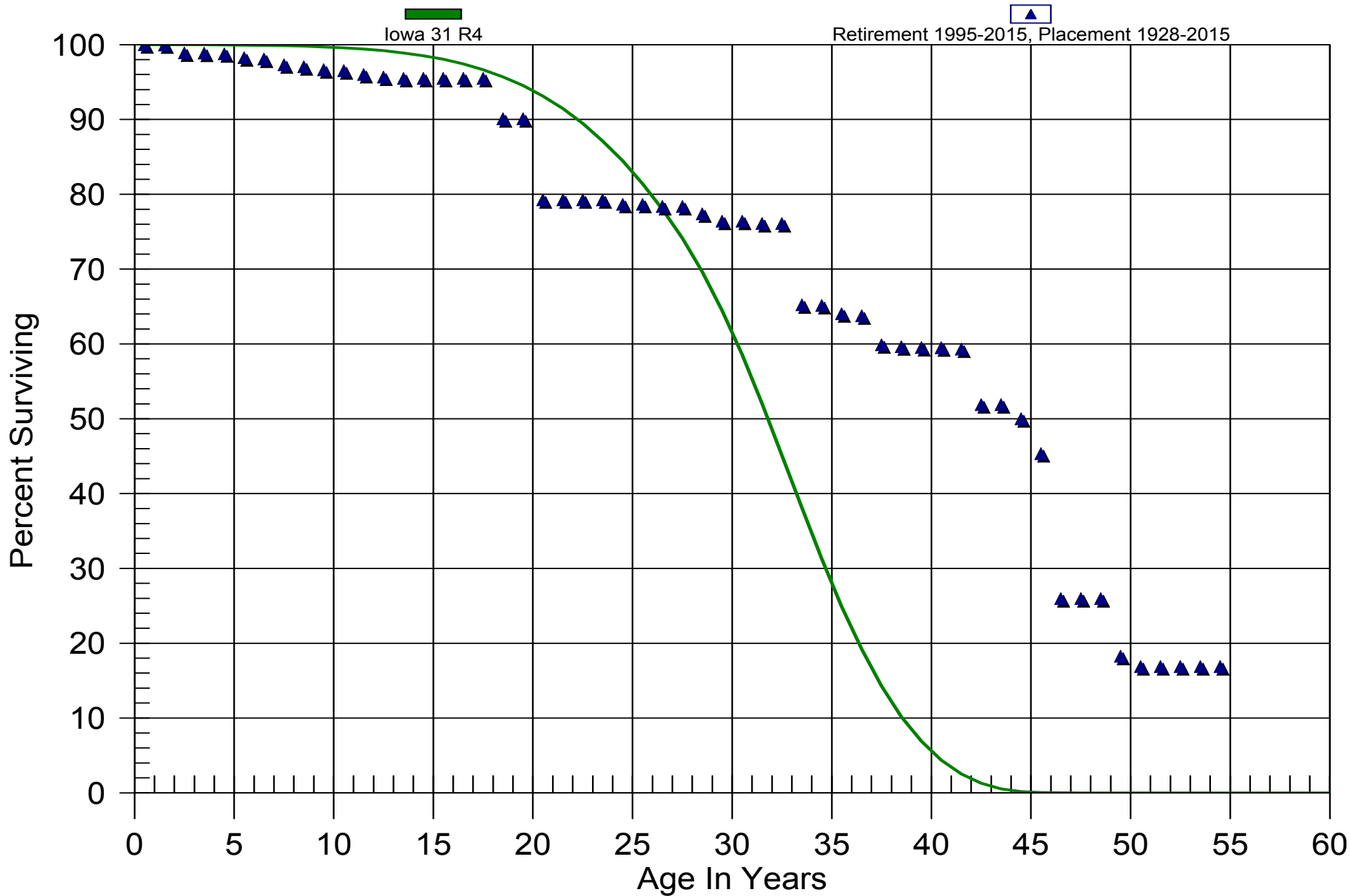


# Montana-Dakota Utilities Company

Gas Division

390.00 STRUCTURES & IMPROVEMENTS

Original And Smooth Survivor Curves

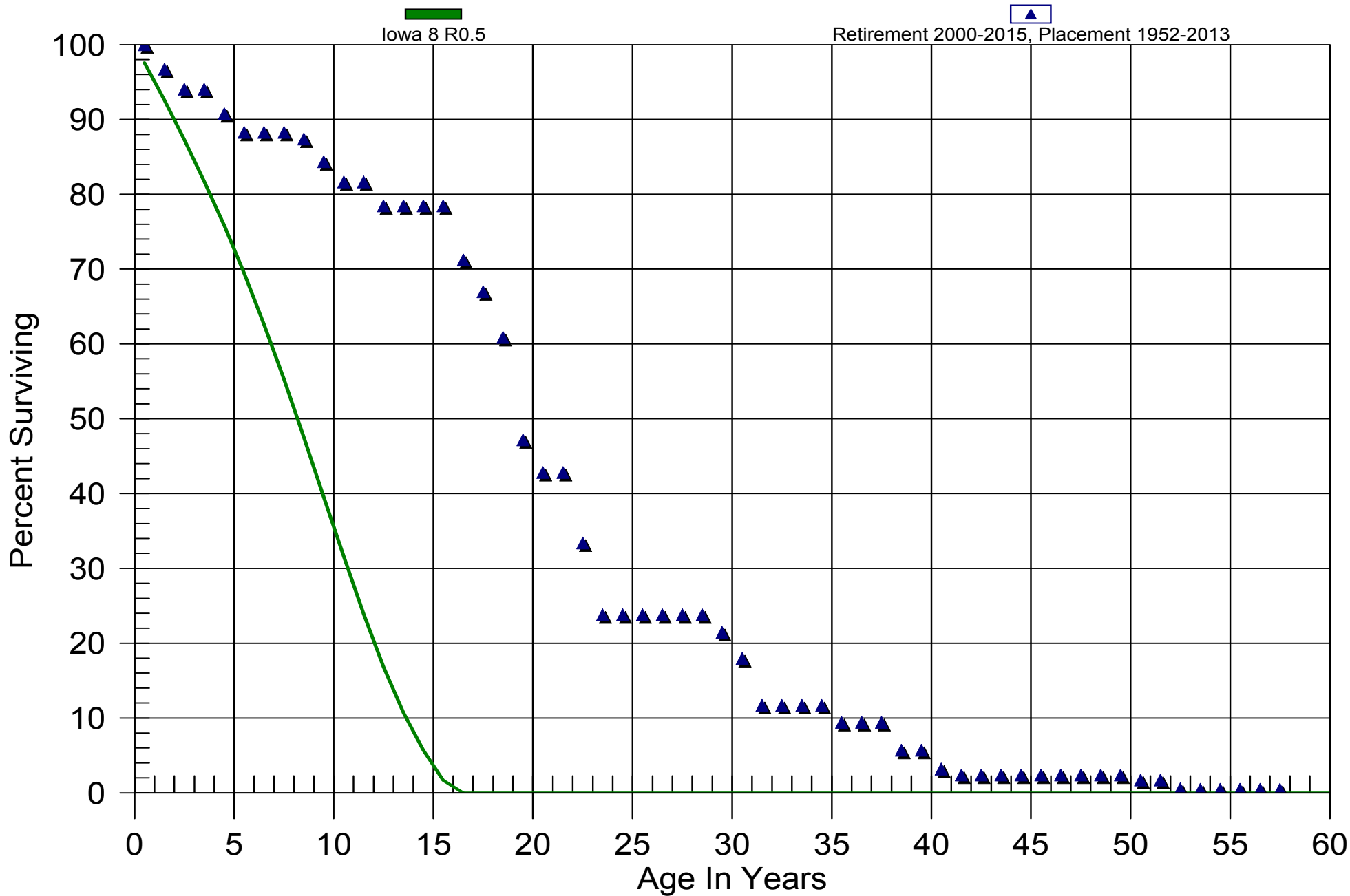


# Montana-Dakota Utilities Company

Gas Division

## 392.10 TRANSPORTATION EQUIPMENT - TRAILERS

### Original And Smooth Survivor Curves



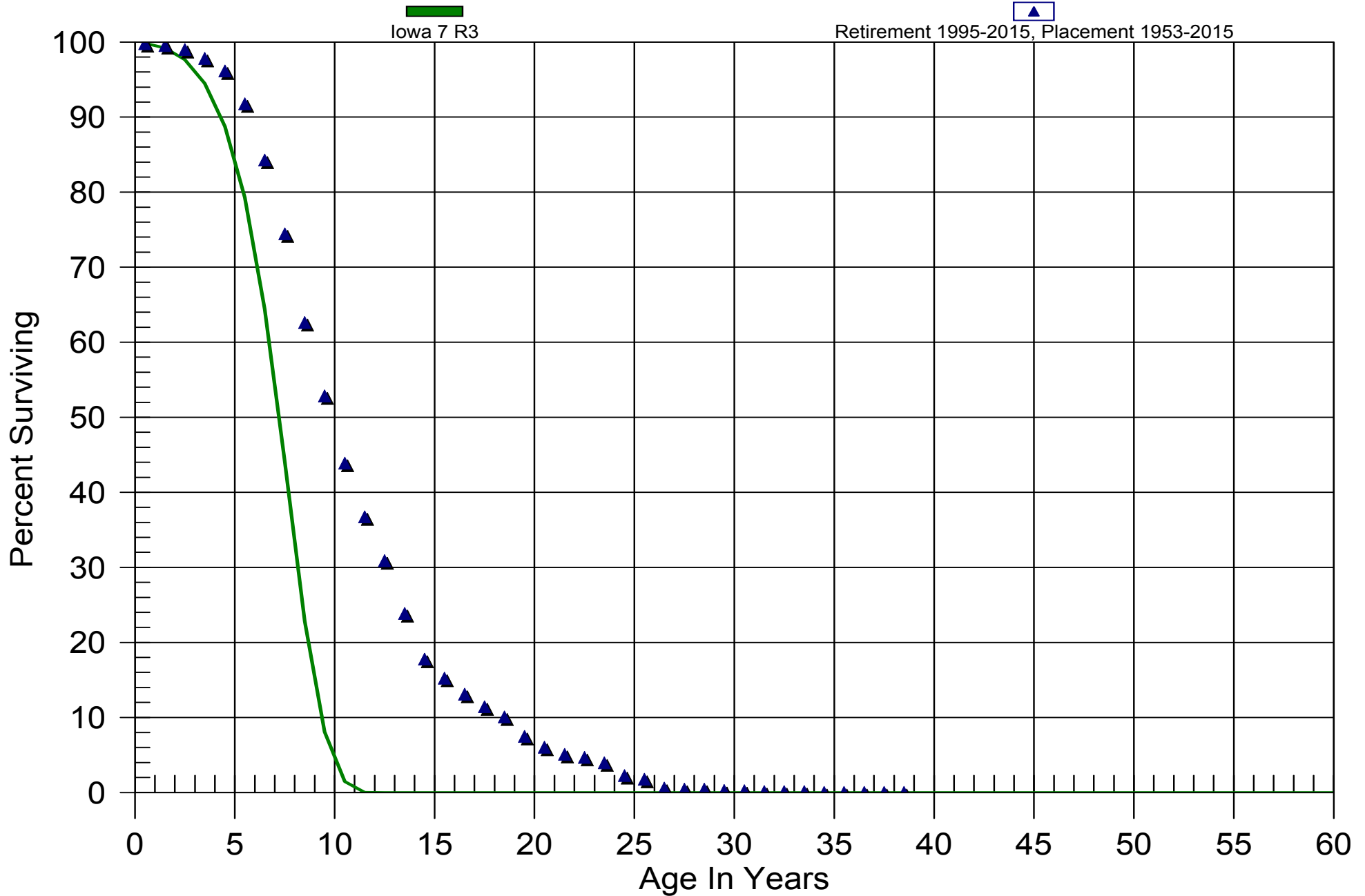


# Montana-Dakota Utilities Company

Gas Division

392.20 TRANSPORTATION EQUIPMENT - CARS & TRUCKS

Original And Smooth Survivor Curves

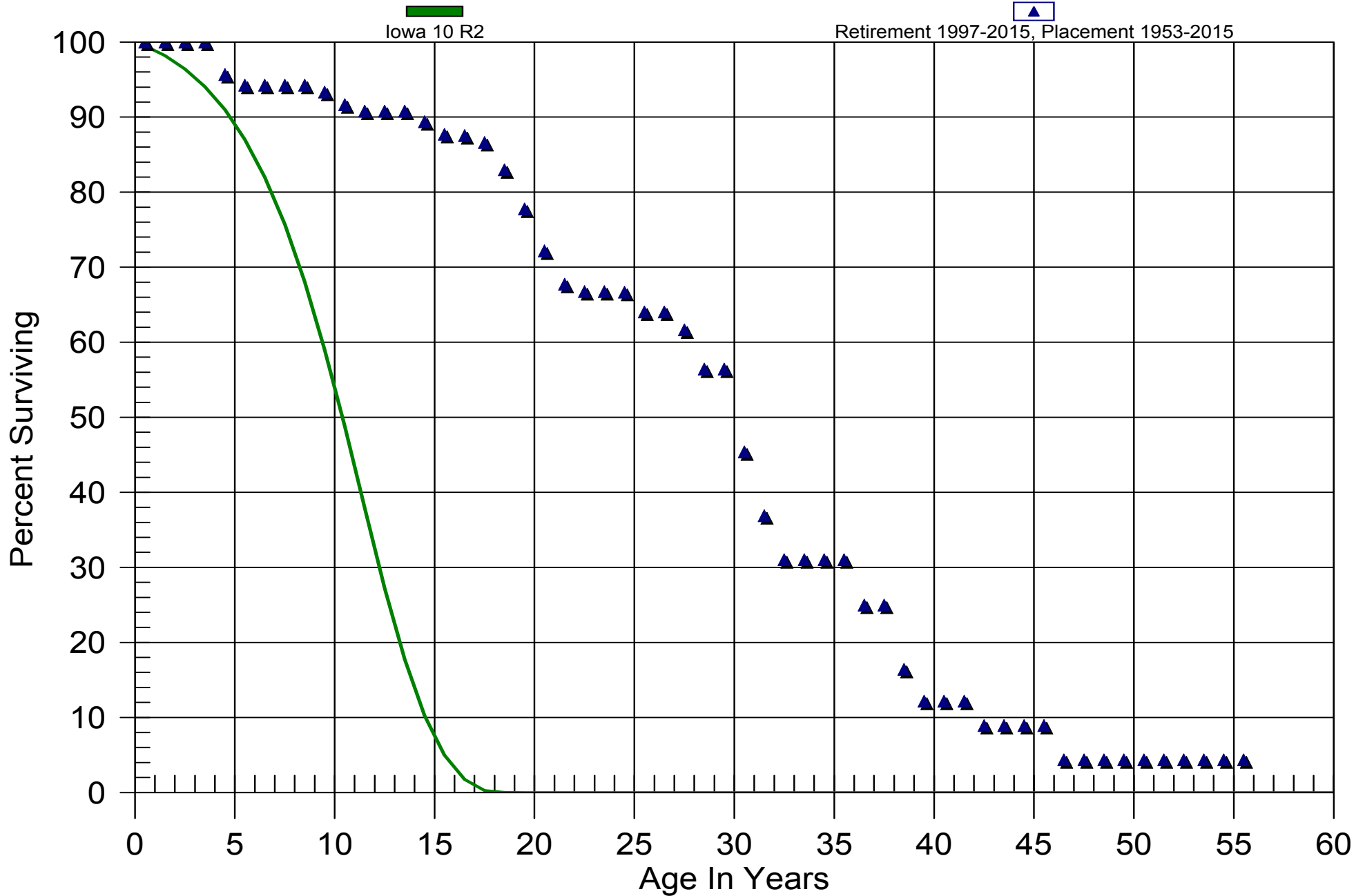


# Montana-Dakota Utilities Company

Gas Division

396.10 WORK EQUIPMENT TRAILERS

Original And Smooth Survivor Curves

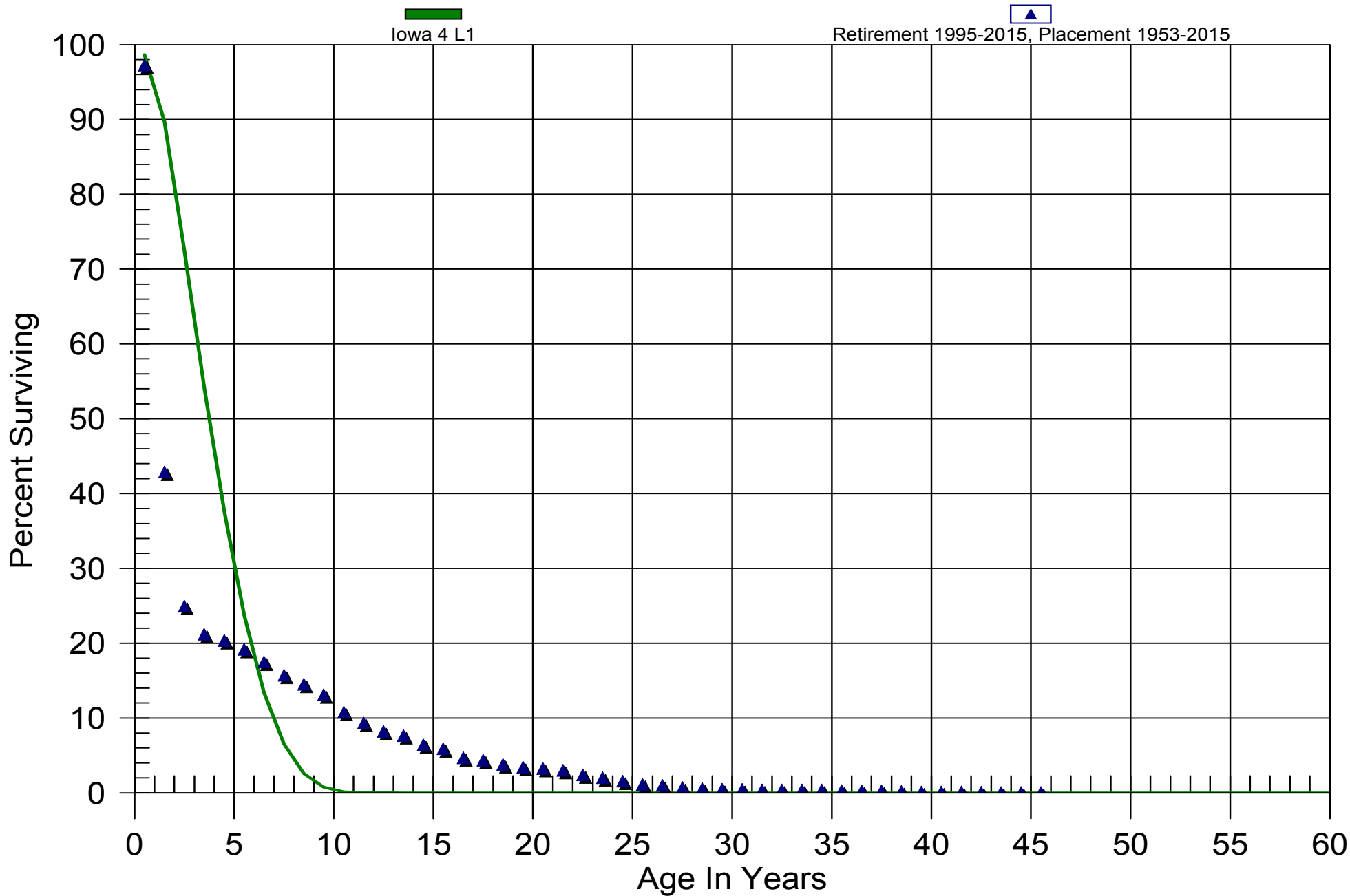


# Montana-Dakota Utilities Company

Gas Division

396.20 POWER OPERATED EQUIPMENT

Original And Smooth Survivor Curves

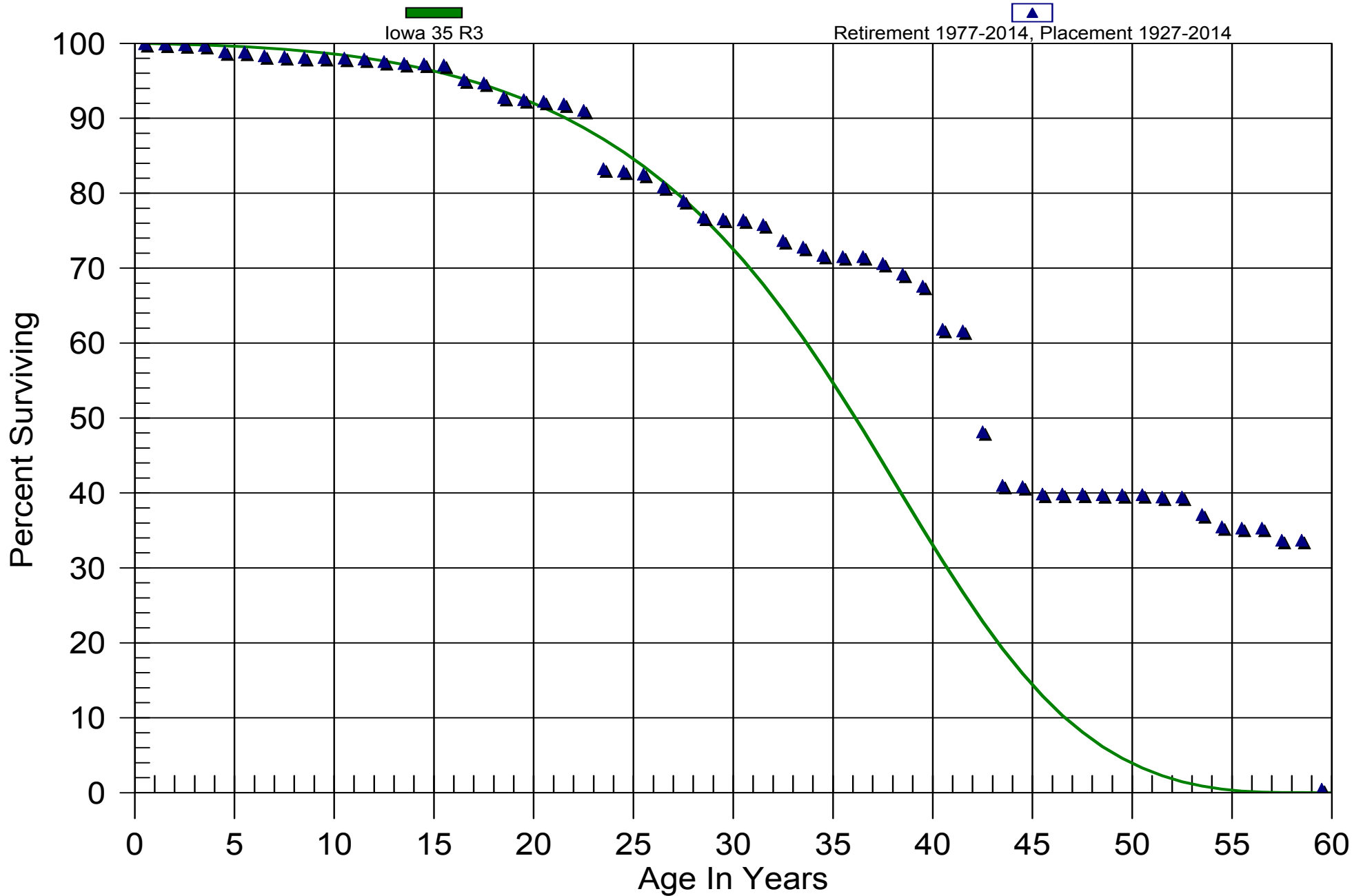


# Montana-Dakota Utilities Company

Common Plant

390.00 STRUCTURES & IMPROVEMENTS

Original And Smooth Survivor Curves

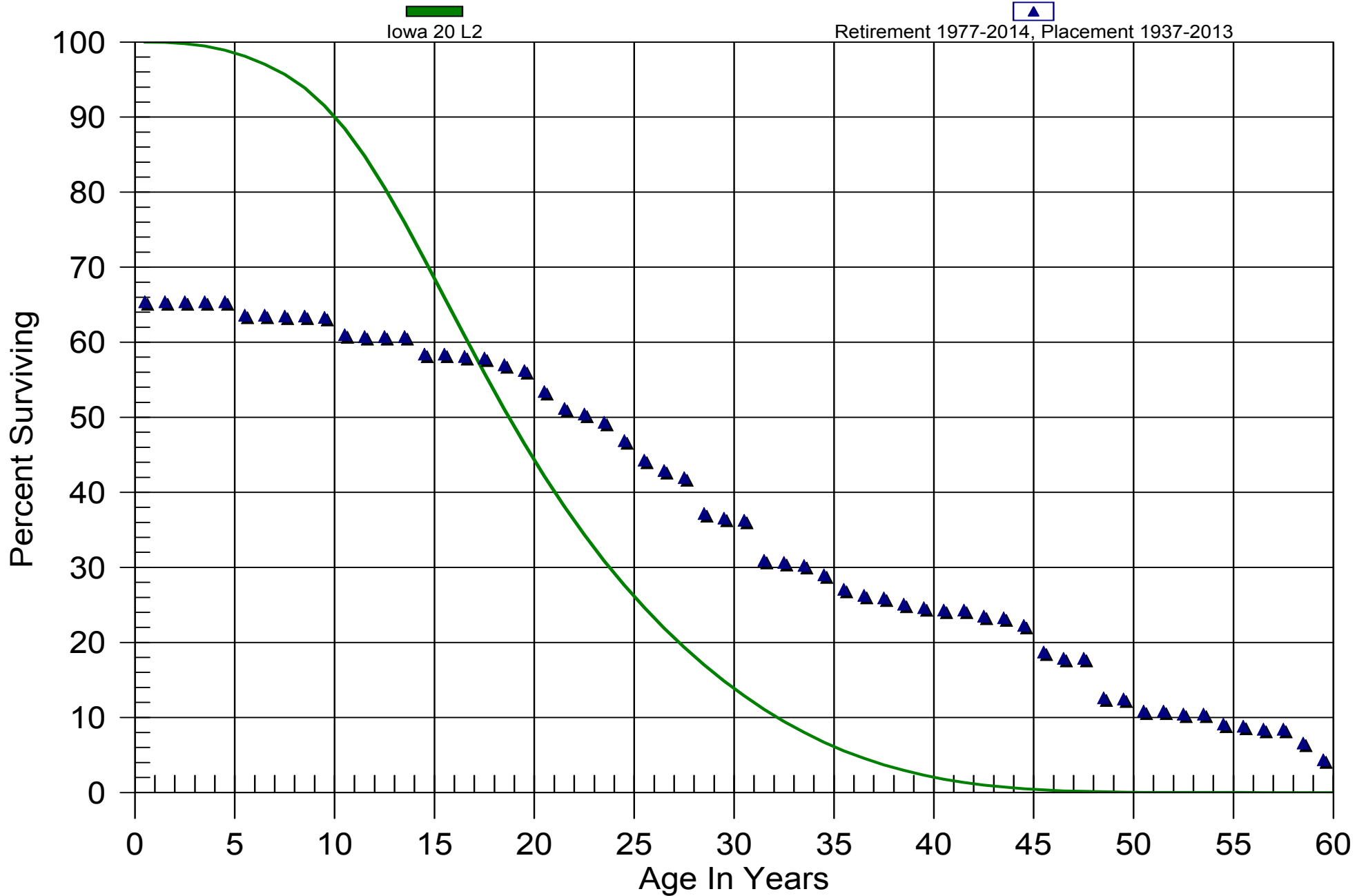


# Montana-Dakota Utilities Company

Common Plant

392.10 TRANSPORTATION EQUIPMENT - (TRAILERS)

Original And Smooth Survivor Curves



# Montana-Dakota Utilities Company

Common Plant

392.20 TRANSPORTATION EQUIPMENT - (CARS & TRUCKS)

Original And Smooth Survivor Curves

